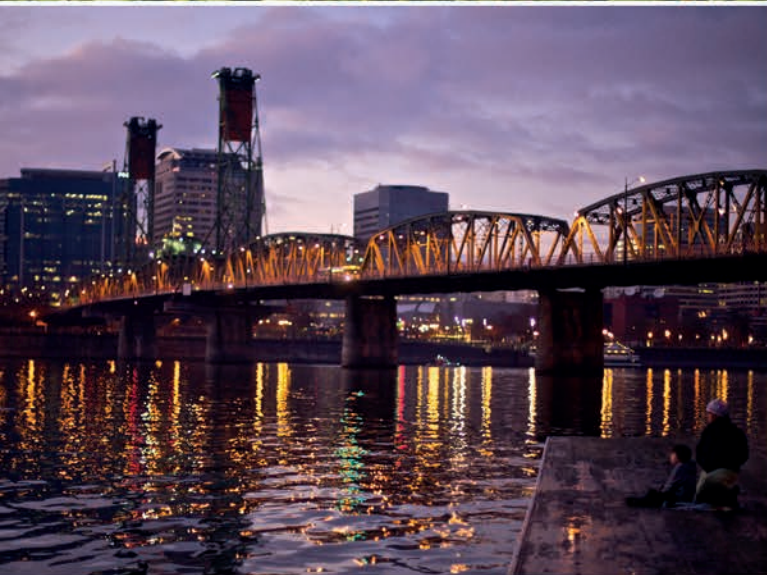


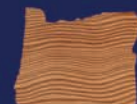
SCENIC OREGON CIRCLE

14 NIGHT FLY DRIVE



FLY TO THE QUIRKY CITY OF PORTLAND, BEFORE EXPLORING OREGON'S WIDE OPEN SPACES AND NATURAL WONDERS. THIS ITINERARY INCLUDES CRATER LAKE NATIONAL PARK, COLUMBIA RIVER GORGE, MOUNT HOOD, HELLS CANYON, SMITH ROCK STATE PARK, PAINTED HILLS AND OREGON'S DRAMATIC COASTLINE.

TRAVEL



OREGON

NORTH AMERICA TRAVEL SERVICE